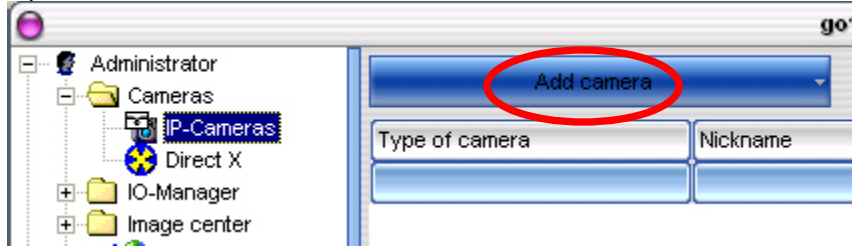


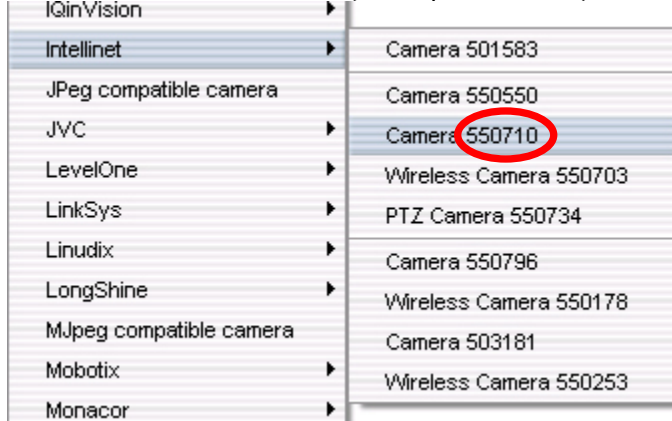
INTELLINET NETWORK SOLUTIONS Network Cameras - How To VIEW In go1984 -

1. JPG CMOS Cameras 550710/550703/550550/550734

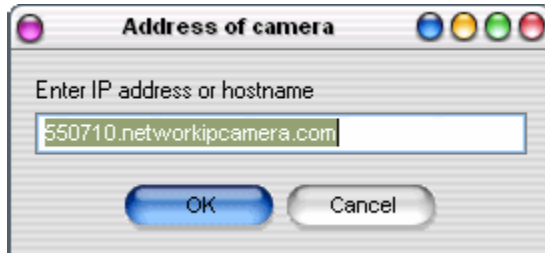
Open GO1984. Click Cameras -> IP Cameras -> Add Camera



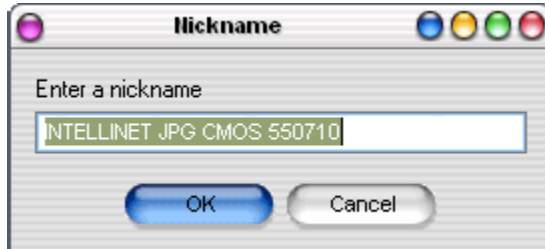
Select the correct model (example 550710):



Enter IP address or hostname:

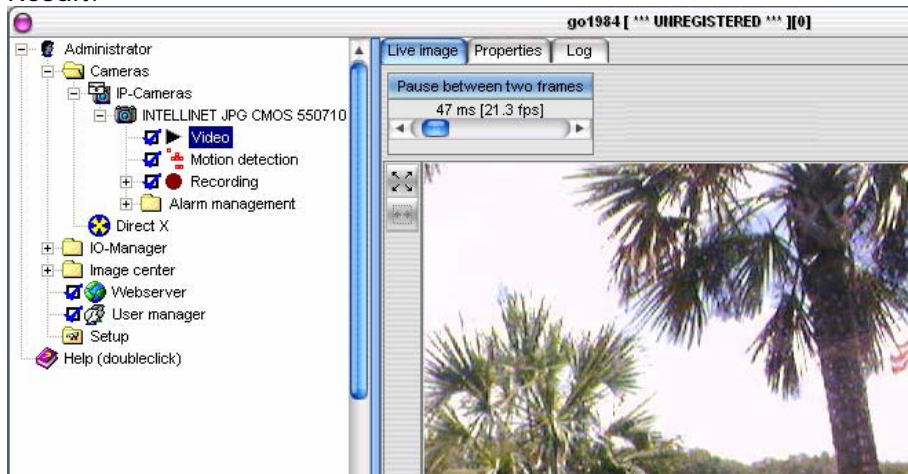


Enter a nickname:

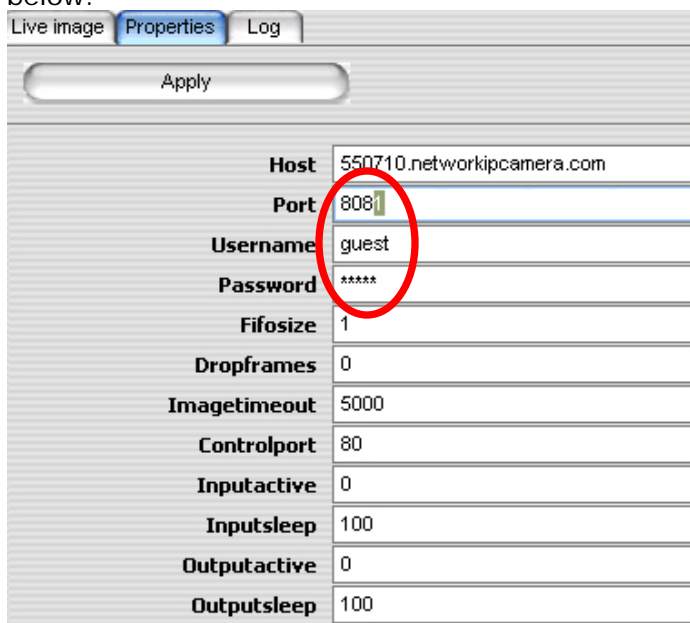


INTELLINET NETWORK SOLUTIONS Network Cameras - How To VIEW In go1984 -

Result:

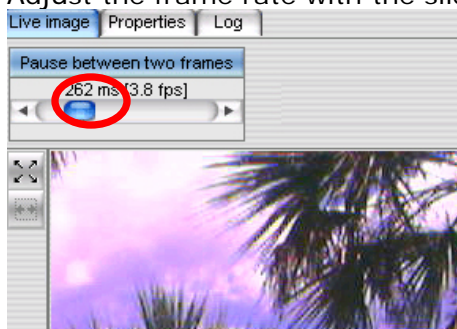


If the live image does not show up, click on PROPERTIES and adjust the values for username, password and PORT (enter the correct image transfer port). See below:



Other values should not be changed.

Adjust the frame rate with the slider as shown below:



INTELLINET NETWORK SOLUTIONS Network Cameras
- How To VIEW In go1984 -

2. **MPEG4 CCD Cameras 550796, 550178, 503181, 550253**

a) Activate the camera's DUAL Mode.

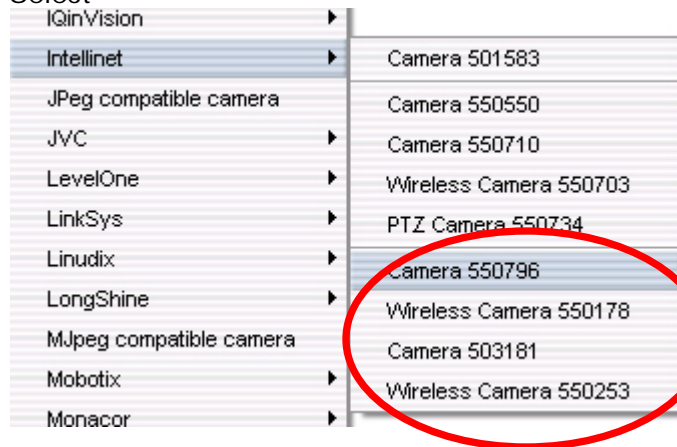
- enter the Administrator Menu and open the System Configuration page
- activate DUAL (MPEG4 & JPEG)
- activate "Direct access"
- set the image file name to 'image'

● **System Configuration**

Camera name (max 10 characters):	<input type="text" value="name"/>
Camera location (max 10 characters):	<input type="text" value="location"/>
Operation Mode:	<input checked="" type="radio"/> Dual(MPEG4 & JPEG) <input type="radio"/> Single(MPEG4 ONLY)
- In dual mode, Audio communication from PC to CAMERA is not available.	
Direct public access to image via HTTP: (http://ipaddress/jpg/imagenam.jpg)	<input checked="" type="radio"/> enable <input type="radio"/> disable
Image file name (max 10 characters):	<input type="text" value="image"/> .jpg

b) Open GO1984. Click Cameras -> IP Cameras -> Add Camera

Select



Enter IP address or hostname and nickname (see above).

Open the properties page to make adjustments if necessary.

INTELLINET NETWORK SOLUTIONS Network Cameras - How To VIEW In go1984 -

3. High Speed Dome Cameras 550260 & 550277

a) Activate the camera's DUAL Mode.

- enter the Administrator Menu and open the video settings page

- activate JPEG

- enable "Direct access"

- set the image file name to 'image'

Video format

MPEG4 JPEG

Image size, Image quality, Image rotation

Image size:

VBR CBR

Frame rate:

Image quality(VBR):

Image rotation:

Bit rate(CBR):

De-interlace function

Enable Disable

Color control

Brightness: [0..255]

Contrast: [0..255]

Saturation: [0..255]

Hue: [0..128]



Direct Image Access

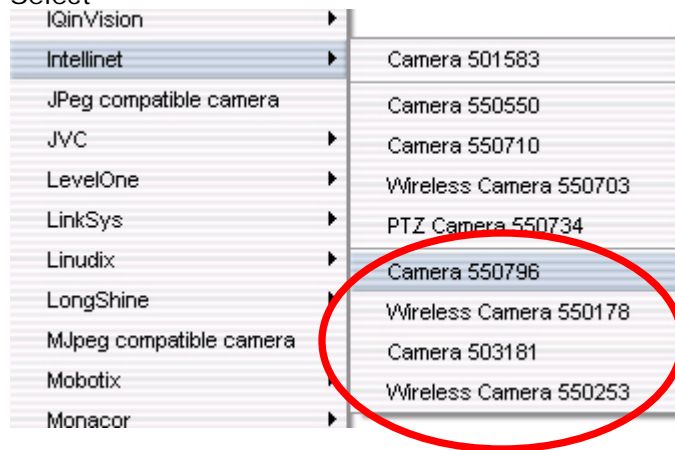
Enable Disable

Image name: .jpg

Example: <http://ipaddress/jpg/image.jpg>

INTELLINET NETWORK SOLUTIONS Network Cameras - How To VIEW In go1984 -

b) Open GO1984. Click Cameras -> IP Cameras -> Add Camera
Select



Important: At this point (June 2007) you have to select one of the four circled models. GO1984 in its current version does not feature a special menu item for the High Speed Dome camera.

GO1984 does not support movement control of the PTZ camera at this time. An updated version of GO1984 is scheduled for release in July/August 2007 offering full support for the High Speed Dome cameras.

Enter IP address or hostname and nickname (see above).
Open the properties page to make adjustments if necessary.

4. **Final Comments**

Technical support for the GO1984 software is provided exclusively by the company Logiware.

If you are having difficulties adding your INTELLINET NETWORK SOLUTIONS camera to this software, please always make sure that you can access the camera with your web browser without any problems. Furthermore please check and make sure that the web server port and image transfer port are entered correctly.

Please also note, that the display performance (image frame rate) of your INTELLINET camera can be significantly lower when viewed with this software compared to the web browser access method. A demo version of this software is provided by the software vendor which shall be used to evaluate the performance before a purchase of the software is being made.

Technical support for our network cameras is provided at
<http://www.networkipcamera.com>.