

INTELLINET NETWORK SOLUTIONS Network Cameras - How To View Bikal's Eyesoft -

1. JPG CMOS Cameras 550710/550703/550734

Connect to the 550710 Network Camera with your web browser.



Click on "Administrator Menu".

INTELLINET NETWORK SOLUTIONS Network Cameras - How To View Bikal's Eyesoft -

Open the Network Configuration page and verify the IP Address and web server port. The example shows the default values.

ADMINISTRATOR MENU

- Image Configuration
- Network Configuration
- User Configuration
- Event Trigger Configuration
- Time Configuration
- System Configuration
- Home

INTELLINET NETWORK SOLUTIONS

• Network Configuration

Set IP, subnet mask, gateway address: manually

IP Address: 192.168.2.221

Subnet mask address: 255.255.255.0

Gateway address: 192.168.1.1

send IP address to e-mail:
(max 30 characters)

Web server port number (80~1023): 80

Image transfer port number (8000~65535): 8080

Upgrade port number (8000~65535): 9000

Ptz port number (8000~65535): 10000

ETSP port number (8000~65535): 11000

Open the System Configuration page and make sure that the image file name is set to "image". If it is not, set the above parameter "Direct public access...." to enable. This will allow to modify the image file name. Then set "Direct public access to image via HTTP:" to disable.

ADMINISTRATOR MENU

- Image Configuration
- Network Configuration
- User Configuration
- Event Trigger Configuration
- Time Configuration
- System Configuration
- Home

INTELLINET NETWORK SOLUTIONS

• System Configuration

Camera name (max 15 characters): my camera

Camera location (max 30 characters): my location

Supply voltage to output port option: supply don't supply

Direct public access to image via HTTP: enable disable
(http://ipaddress/jpg/imagename.jpg)

Image file name (max 10 characters): image.jpg

PTZ control: enable disable

PTZ Controller Selection: LGLPT-A100L

System Information:

Model: INT-L10

Serial Number: INTL10B052345

Bootrom Version: BL010002.6

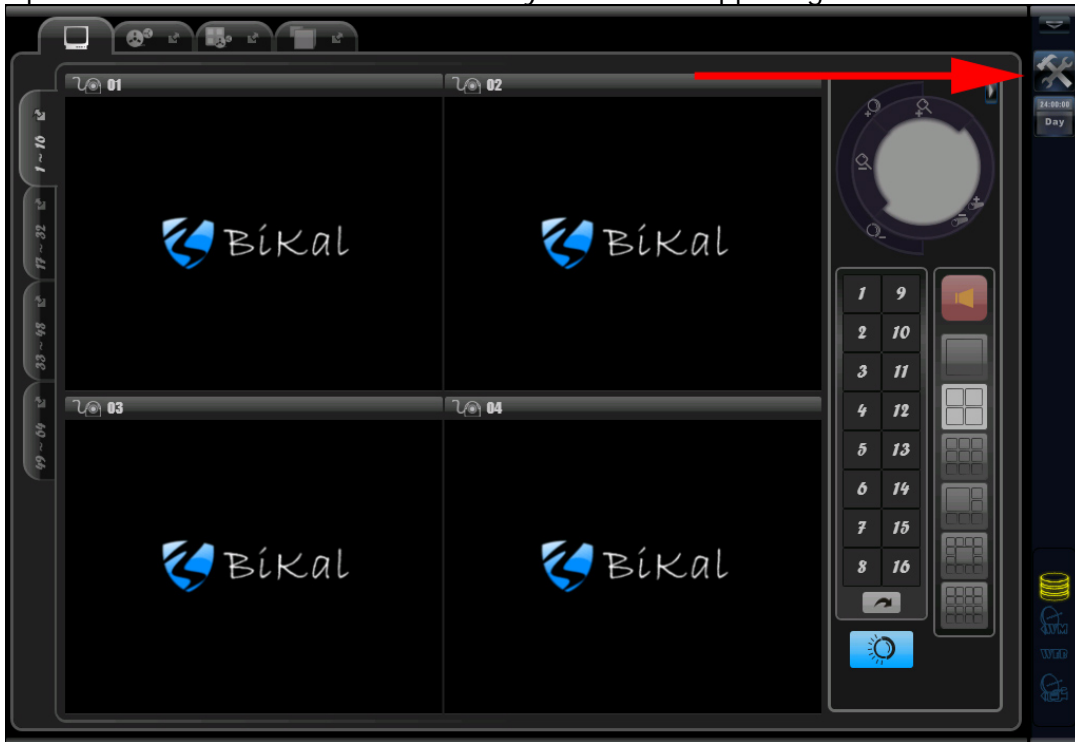
Firmware Version: FL000004.25

Mac Number : 00:0c:1c:00:e0:79

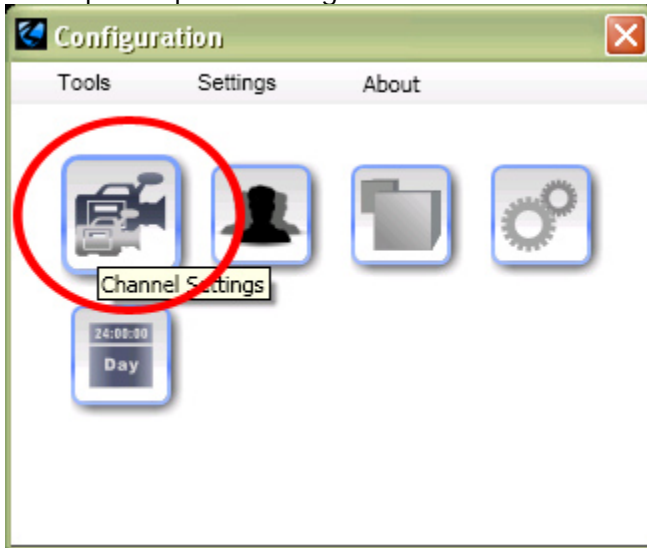
This is all you need to do here.

INTELLINET NETWORK SOLUTIONS Network Cameras - How To View Bikal's Eyesoft -

Open EYESOFT and click on the tools symbol in the upper right corner.



This opens up the Configuration Window. Click on "Channel Settings".



INTELLINET NETWORK SOLUTIONS Network Cameras - How To View Bikal's Eyesoft -

Open the tab "Capture Source" -> "Video".

Channel Settings

Channels

1	17	33	49
2	18	34	50
3	19	35	51
4	20	36	52
5	21	37	53
6	22	38	54
7	23	39	55
8	24	40	56
9	25	41	57
10	26	42	58
11	27	43	59
12	28	44	60

Capture Source | Analytics | Filters | Event Handler | Devices | Compression | Misc

Video | Attach Video | Attach Audio

1 Module: [Network Camera] INTELLINET 550710 Bind Module 2

Server Address 192.168.1.221 3
Note: If the camera port is not 80, please set the port like this :<server_address>:<port number> (e.g. 192.168.1.253:9999)

Login ID guest 4
Login Password ●●●●

Trigger Sound Alarm On Sample Arrival
 Trigger Alarm Indicator On Sample Arrival

Source Type Jpeg 5
Frame Rate 30.00

Note: Please try different settings until video shows up.

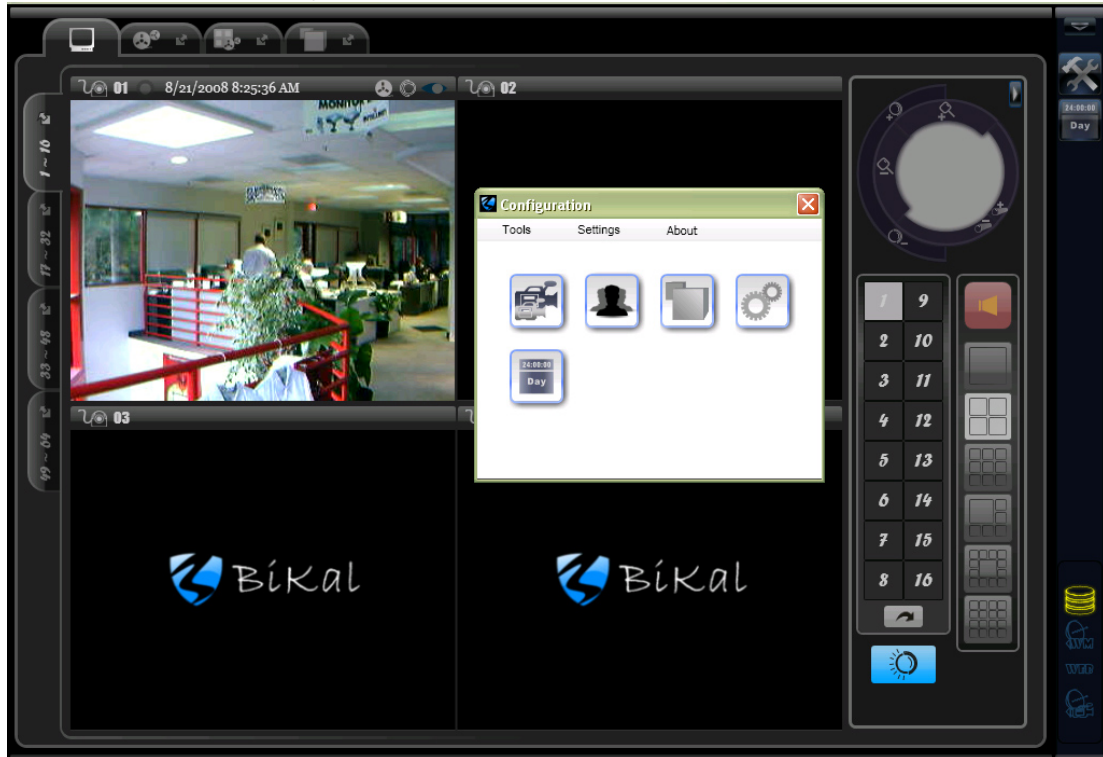
Apply 6

(Attach Video is general for dual streams IP camera/DVS. Please refer to our manual for more information.)

- 1) Select "[Network Camera] Intellinet 550710"
- 2) Enable "Bind Module"
- 3) Enter the camera's IP address, or web address. If the web server port is not 80, you need to enter the address differently. Example: Web Server port = 85. Server Address: 192.168.2.221:85
- 4) Enter a valid Login ID and Login Password. This can be any valid user account in the camera. The account does not need to have administrator rights.
- 5) Set the "Source Type" to "Jpeg"
- 6) Click "Apply".

INTELLINET NETWORK SOLUTIONS Network Cameras - How To View Bikal's Eyesoft -

EYESOFT will now try to establish a connection to the camera and display the video. It all works well, it will look like this.



2. Final Comments

Technical support for the Eyesoft software is provided exclusively by the company Bikal.

If you are having difficulties adding your INTELLINET NETWORK SOLUTIONS camera to this software, please always make sure that you can access the camera with your web browser without any problems. Furthermore please check and make sure that the web server port and IP address are entered correctly.

Please also note, that the display performance (image frame rate) of your INTELLINET camera can be significantly lower when viewed with this software compared to the web browser access method. A demo version of this software is provided by the software vendor which shall be used to evaluate the performance before a purchase of the software is being made.

Technical support for our network cameras is provided at <http://www.networkipcamera.com>.